

*Renowned hot springs
and
generous accommodations*

Onsen Hotel Nakahara Bessou

**All rooms are non-smoking
and earthquake resistant.**

温泉ホテル

中原別荘

客室禁煙・耐震改修済

Registered Japanese Inn
Act on the Development of Hotels for Inbound Tourists

Onsen Hotel Nakahara Bessou

**All rooms are non-smoking
and earthquake resistant.**

15-19 Terukuni-cho, Kagoshima City 892-0841 (facing Central Park)
TEL +81-99-225-2800 FAX +81-99-226-3688
e-mail: info@nakahara-bessou.co.jp
<http://nakahara-bessou.co.jp>



Getting here

- ◎ About 8 minutes by taxi from Kagoshima-Chuo Station.
- ◎ About 20 minutes by car from the Kagoshima-kita IC on the Kyushu Expressway.
- ◎ You can take a limousine bus from Kagoshima Airport to the Tenmonkan bus stop. The ride takes about 50 minutes, and the inn is about a 5-minute walk from the bus stop.

Quick facts

- ◎ Construction 7-floor reinforced concrete building
Heating and cooling in all rooms
Private baths and restrooms
Certified under the Fire Safety Certification Mark System
Certified as meeting earthquake resistance standards
Tsunami escape building
- ◎ Capacity 200 standard guests (250 group guests or 380 students)
- ◎ Rooms 50 Japanese-style rooms, 2 Western-Japanese hybrid rooms,
5 Western-style rooms
- ◎ Common areas Hall (142㎡, up to 120 guests),
large banquet hall (105 Tatami-mat, up to 180 guests),
medium banquet hall (47 Tatami-mat, up to 80 guests),
small banquet hall (30 Tatami-mat)
Wedding venue, meeting room, Hana Noren restaurant,
Satsuma-an restaurant
- ◎ Natural hot spring Common bath area (one for men and one for women)
- ◎ Internet Wi-Fi available throughout the building

Nakahara Bessou is perfectly positioned to put you right in the heart of all the urban bustle, soothing greenery, and rich history that Kagoshima has to offer.



Kagoshima is symbolized by Sakurajima, which rises majestically out of the waters of sparkling Kinko Bay. Right in the middle of the city, you'll find Tenmonkan, the busiest shopping quarter in Southern Kyushu. Wander away from Tenmonkan, and you're sure to get caught up in the historic scenes of Satsuma, with its castle ruins and stone walls dating back to the late Tokugawa period through the Meiji Restoration. Not far from there, you can immerse yourself in the modern beauty of art museums, halls of literature, and more. Travel up the road to the forests on the Shiroyama Nature Trail, where you can see the streets of Satsuma or catch a glimpse of Sakurajima rising out of Kinko Bay.



KAGOSHIMA NAKAHARA BESSOU



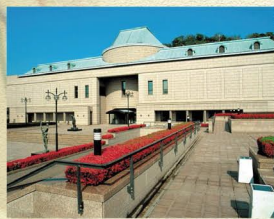
Central Park in front of Nakahara Bessou (Photo courtesy of Kagoshima City)



Bronze statue of Saigo Takamori



Tenmonkan



Kagoshima City Museum of Art



Tsurumaru Castle ruins

Nearby attractions

- Tenmonkan: 5 minute walk
- Bronze statue of Saigo Takamori: 4 minute walk
- Kagoshima City Museum of Art: 4 minute walk
- Terukuni Shrine: 4 minute walk
- Reimeikan (Kagoshima Prefectural Center for Historical Material) : 10 minute walk
- Shiroyama observation deck: 10 minutes by car
- Sengan-en Garden: 15 minutes by car
- Sakurajima ferry dock: 5 minutes by car
- Dolphin Port: 5 minutes by car
- Kagoshima Aquarium: 6 minutes by car

All guest rooms are smoke-free.

Seismic retrofits completed throughout the building

Our four guest promises: safety, reliability, and comfort



Conforms to
Earthquake-Resistance Standards
Powerful earthquake-resistant structure



Tsunami Escape Building
During an emergency, this location has been designated as a tsunami escape building by the city of Kagoshima.



Fire Safety Certification Mark
Thorough fire and disaster risk management
November 2014: Conforms to Kagoshima City
Fire Department standards



Smoke-free rooms
prevent passive smoking fires
Smoke-free for a clean indoor environment
(Designated smoking areas available.)

Welcome

Meeting safety standards means ensuring both earthquake and fire resistance

Starting in May 2014, we underwent approximately four months of renovations, thoroughly overhauling our facilities. The phrase "safety and reliability" has become a buzzword in Japan lately, particularly when it comes to the food industry. With safety, we focused on building safety--carrying out sweeping renovation projects to ensure earthquake resilience and fire protection. To make our building safe from earthquakes, we carried out seismic retrofitting in accordance with revisions to the Act for Promotion of Renovation for Earthquake-Resistant Structures that was enacted in November 2013. Our swift action has made us a leader in earthquake protection, not only among hotels and Japanese inns in Kagoshima Prefecture, but throughout Japan as well. With fire safety, we carried out work in accordance with the Fire Safety Certification Mark System updated in April 2014. Thanks to these efforts, we were able to simultaneously receive certification for conforming to both official earthquake-resistance standards and official fire safety standards.

You may get a peek at some of the seismic reinforcement braces inside our building, but we hope they'll give you peace of mind knowing that you'll be safer and more comfortable in our faculty than ever before.



Smoking area



Earthquake-resistant braces (PitaColumn method)



Steel-braced guest rooms

April, 2016

Onsen Hotel Nakahara Bessou
(All rooms are non-smoking and earthquake resistant.)

Management

Brace

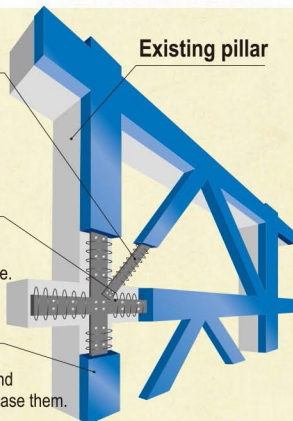
Placed diagonally across the building to strengthen the structure.

Post-construction anchors

The anchors are embedded in concrete to fix the steel plates in place.

Support members

Rings are distributed around the steel plates and concrete is poured to encase them.



PitaColumn method

The PitaColumn retrofit method applies thin, steel-plated concrete members to the outside of the building to protect it from earthquakes.



1. Post-construction anchors are fitted to existing pillars at a set pitch.
2. Steel plates are attached to the anchors and oval-shaped rings positioned at regular intervals.
3. A layer of concrete about 20 cm thick is poured to wrap the structure.



Hanging smoke barriers

Hanging smoke barriers are linked to smoke detectors and lowered in the event of a fire. They create a smoke-resistant compartment that prevents smoke-related accidents.



Fireproof shutters

In the event of a fire, shutters will automatically lower over elevator doors to prevent smoke and flames from spreading to other floors through the shaft.

Ready whenever you arrive... and so comfortable you won't



First-floor lobby



Course meal featuring local specialties like kawara-soba and tonkotsu pork stew

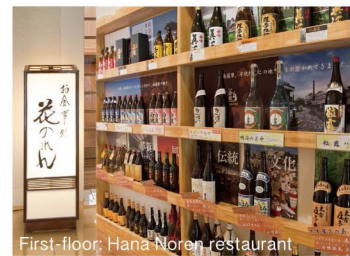
Art

Enjoy our displays of art related to the Kagoshima area. Satsuma porcelain was displayed at the 1867 World's Fair in Paris, where it charmed the European nobility with its vibrant colors and exquisite detail. Spend some time looking at our many examples of world-class Kagoshima art styles.



Food

At our Hana Noren restaurant, you can enjoy tonkotsu pork stew or shabu-shabu made with Kurobuta pork that we source exclusively from local farmers. Or try a traditional kaiseki course meal featuring Kagoshima specialties like kibinago herring sashimi. We also have an extensive list of top-shelf sweet potato shochu to choose from. We have both Western-style and tatami seating available so you can make yourself comfortable for a leisurely dining experience.



First-floor: Hana Noren restaurant



Second-floor: Satsuma-an restaurant

t want to leave.



Common bath area

Onsen

Our hot-spring baths are 100% free-flowing natural water, never heated, diluted, or stored. The source of the spring is located deep in the ground, 800 meters below the hotel. They say it takes a thousand years for rainwater to seep this far into the earth.



Japanese-Western hybrid



Japanese-style suite

Accommodations

Let our spacious Japanese-style rooms melt away the cares of the day. Delight in the sights of Japan's four distinct seasons as you gaze out the window onto Central Park, a perfect blend of the area's natural and urban charms. (Western-style rooms also available)



Standard room



Large banquet hall

Banquet room

Kinko banquet room

